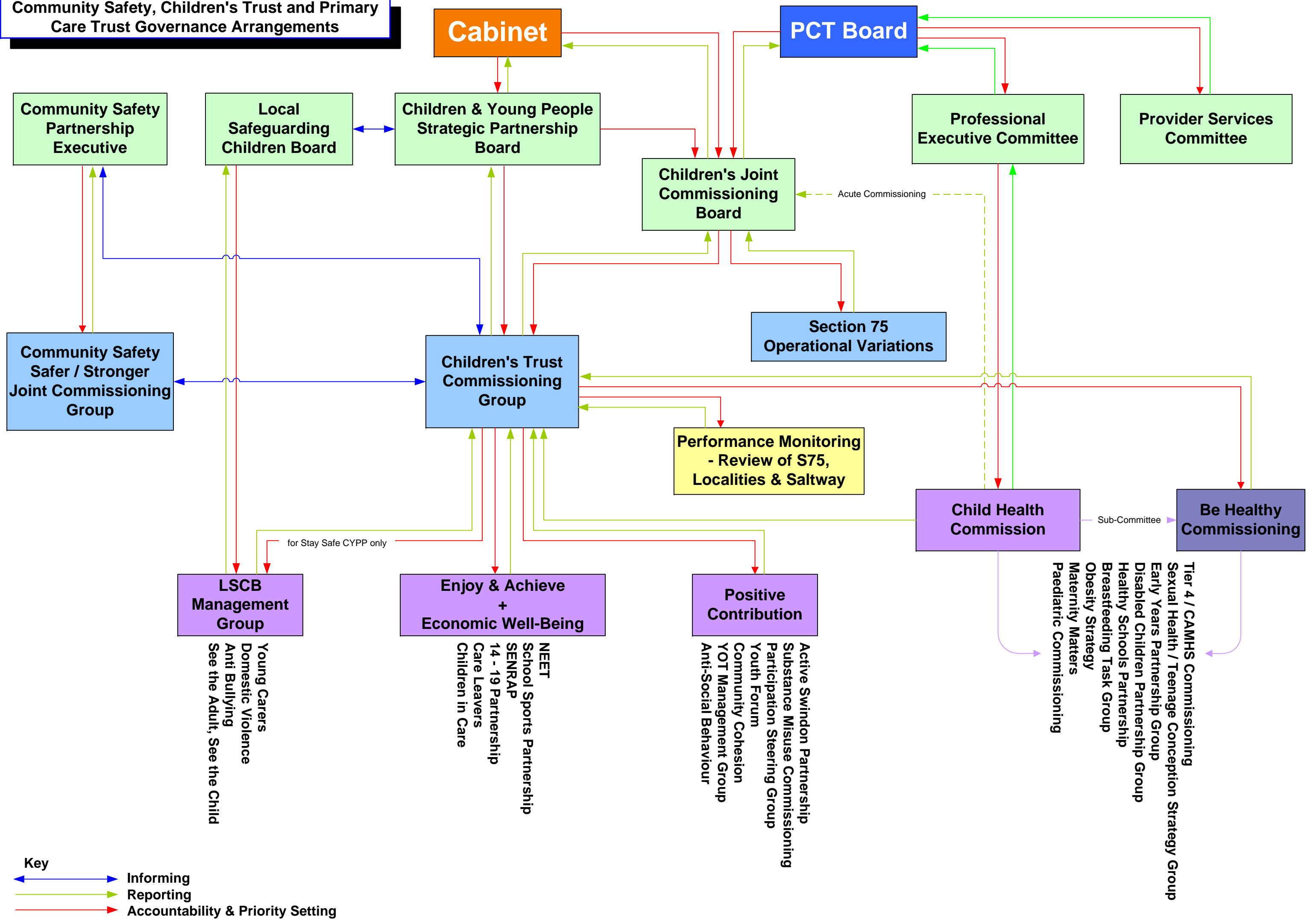


Community Safety, Children's Trust and Primary Care Trust Governance Arrangements



Cabinet

PCT Board

Community Safety Partnership Executive

Local Safeguarding Children Board

Children & Young People Strategic Partnership Board

Children's Joint Commissioning Board

Professional Executive Committee

Provider Services Committee

Community Safety Safer / Stronger Joint Commissioning Group

Children's Trust Commissioning Group

Section 75 Operational Variations

Performance Monitoring - Review of S75, Localities & Saltway

Child Health Commission

Be Healthy Commissioning

LSCB Management Group

Enjoy & Achieve + Economic Well-Being

Positive Contribution

- Young Carers
- Domestic Violence
- Anti Bullying
- See the Adult, See the Child

- NEET
- School Sports Partnership
- SENRAP
- 14 - 19 Partnership
- Care Leavers
- Children in Care

- Active Swindon Partnership
- Substance Misuse Commissioning
- Participation Steering Group
- Youth Forum
- Community Cohesion
- YOT Management Group
- Anti-Social Behaviour

- Tier 4 / CAMHS Commissioning
- Sexual Health / Teenage Conception Strategy Group
- Early Years Partnership Group
- Disabled Children Partnership Group
- Healthy Schools Partnership
- Breastfeeding Task Group
- Obesity Strategy
- Maternity Matters
- Paediatric Commissioning

Key

- ↔ Informing
- Reporting
- Accountability & Priority Setting