

# Councillor Rod Bluh

Leader of Swindon Borough Council  
Police Authority Member

# Agenda

- Welcome and Introduction – Cllr Rod Bluh
- Introduction to new Divisional Commander, Swindon Police – Chief Superintendent Paul Howlett
- Swindon Community Safety Partnership - Richard Palusinski, Head of Community Safety
- Wiltshire Police Authority Budget and Plans for 2008/09 – Kieran Kilgallen, Chief Executive Wiltshire Police Authority
- Raising Awareness of Counter Terrorism
- Open Forum
- Close – Cllr Rod Bluh

**Paul Howlett**

**BCU Commander  
Wiltshire Police**

# Richard Palusinski

**Head of Community Safety**  
**Swindon Community Safety Partnership**

# What is the CSP?

## Statutory Partnership

- Primary Care Trust
- Police
- Police Authority
- Swindon Borough Council
- Fire & Rescue
- Probation Service

Keeping Swindon **Safe**



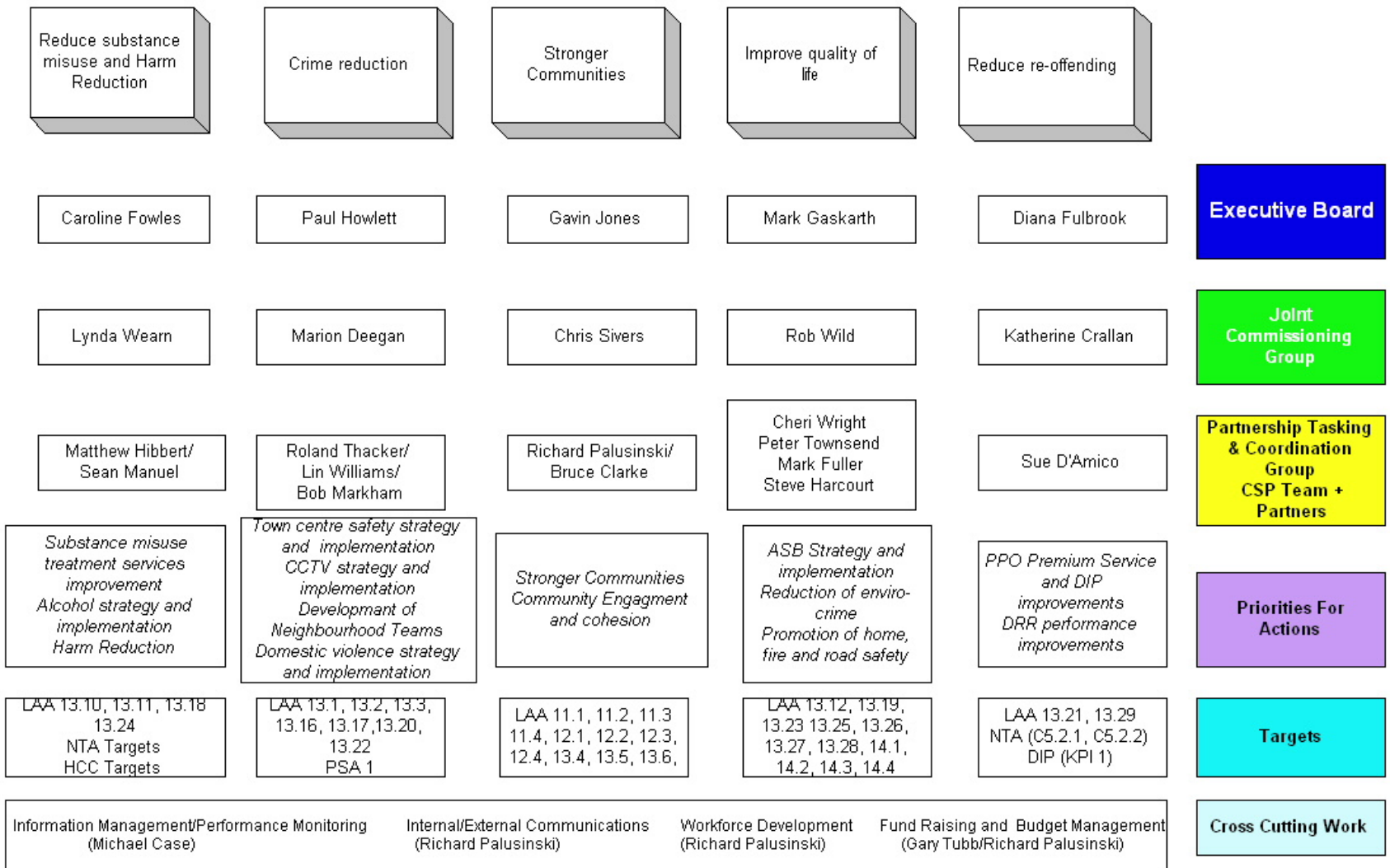
# What do we do?

- Crime reduction
- Anti Social Behaviour
- Domestic Violence
- Drug Treatment Services

# How are we managed?

- Executive Board
  - Responsible Body
- Joint Commissioning Group
  - Tactical delivery
  - Performance management
- Tasking and Coordinating Group

**DELIVERY CHAMPION STRUCTURE**



**Swindon Community Safety Partners working together**

Swindon Borough Council, Swindon Primary Care Trust, Wiltshire Police, Wiltshire Fire & Rescue Service, Wiltshire Probation Area, Wiltshire Police Authority

# Setting the agenda

- Partnership Strategic Assessment
  - Examines data and trends
  - Applies prioritisation matrix
  - Recommends priorities
- Partnership Plan
  - Details tactical delivery
  - Reconciles with national and regional targets
  - Public consultation

# Strategic Assessment

## PRIORITY ISSUES

- Reduce volume of antisocial behaviour
- Reduce drug misuse (including acquisitive crime and drug supply)
- Increase reports and reduce repeat incidents of domestic violence
- Reduce alcohol misuse and related crime
- Improve detections of sexual offences
- Reduce volume, and improve detections of, criminal damage
- Terrorism awareness

# Strategic Assessment

## PRIORITY INITIATIVES

- Community cohesion and engagement
- Alcohol misuse treatment
- Drug misuse treatment
- Priority and prolific offenders
- Town centre strategy

# Partnership Plan

## Reduce Substance Misuse and Harm Reduction

- Target known drug hot spots
- Make best use of new drug treatment services
- Take action to reduce alcohol misuse
- Take positive action to reduce harm arising from substance misuse

# Partnership Plan

## Crime Reduction

- Address issues identified in the town centre (night and day)
- Complete and implement CCTV strategy
- Implement domestic violence strategy
- Positive action to reduce criminal damage
- Developing partnerships within communities
- Making community safety part of everyday business

# Partnership Plan

## Stronger Communities

- Positive action to maintain and improve community cohesion
- Reduce Fear of crime
- Improve community engagement



# Partnership Plan

## Improve Quality of Life

- Implementation of anti-social behaviour strategy
- Reduction of enviro-crime
- Promotion of home and fire safety
- Promotion of road safety

# Partnership Plan

## Reduce Re-offending

- Work with drug treatment services to improve speed of access for priority and prolific offenders
- Improve effectiveness of the Drug Intervention Programme
- Work with Courts and drug treatment services to improve Drug Rehabilitation Requirement effectiveness.

# Brian Ford

## Vice Chair

## Wiltshire Police Authority